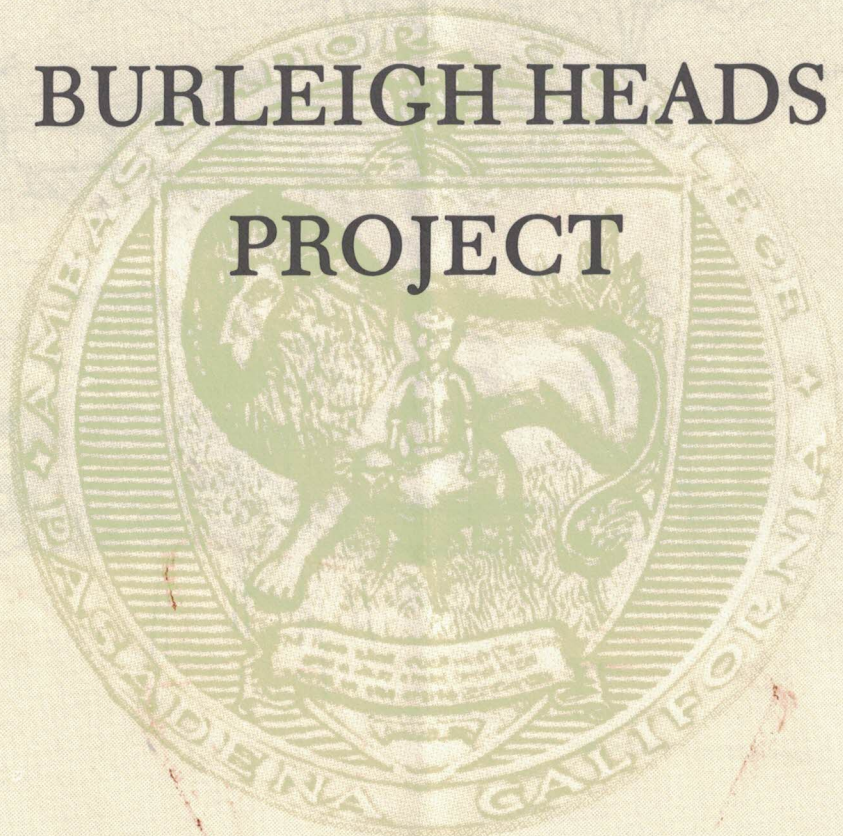
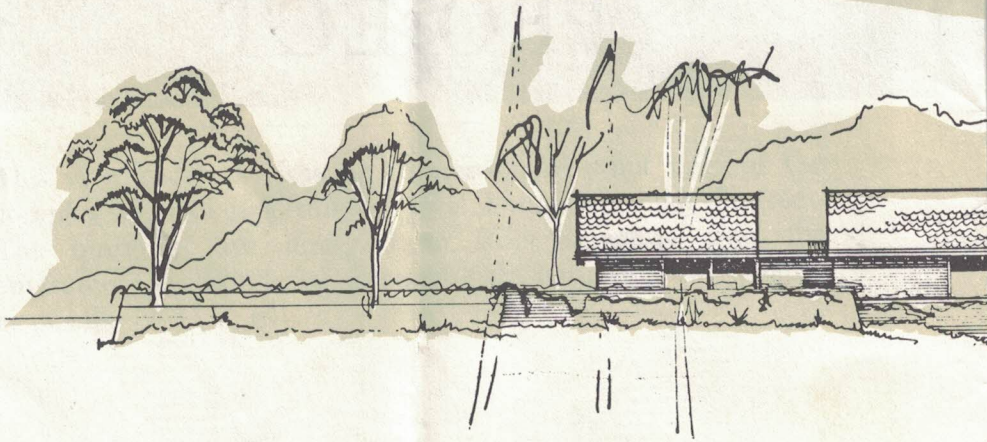


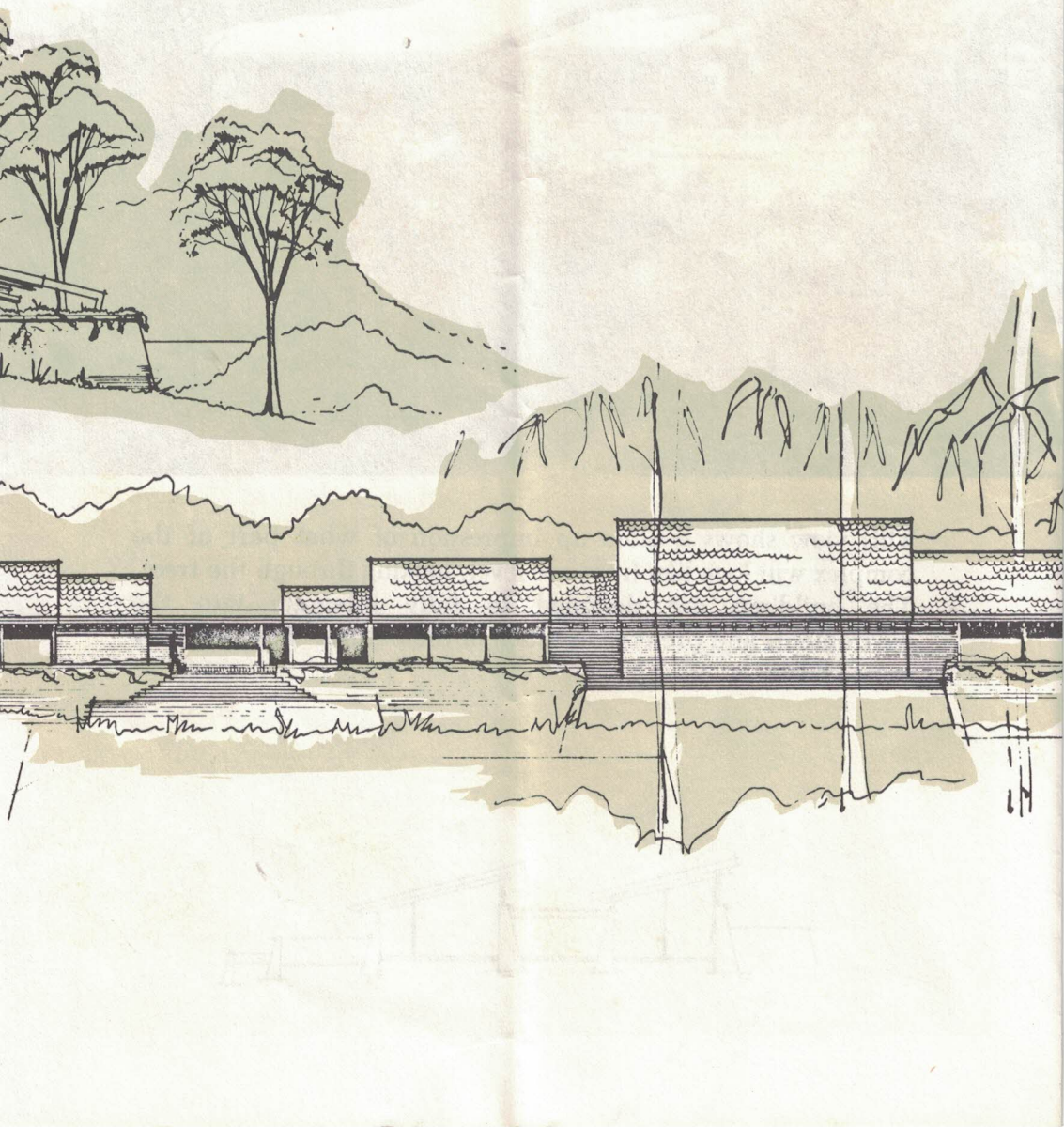
AMBASSADOR COLLEGE

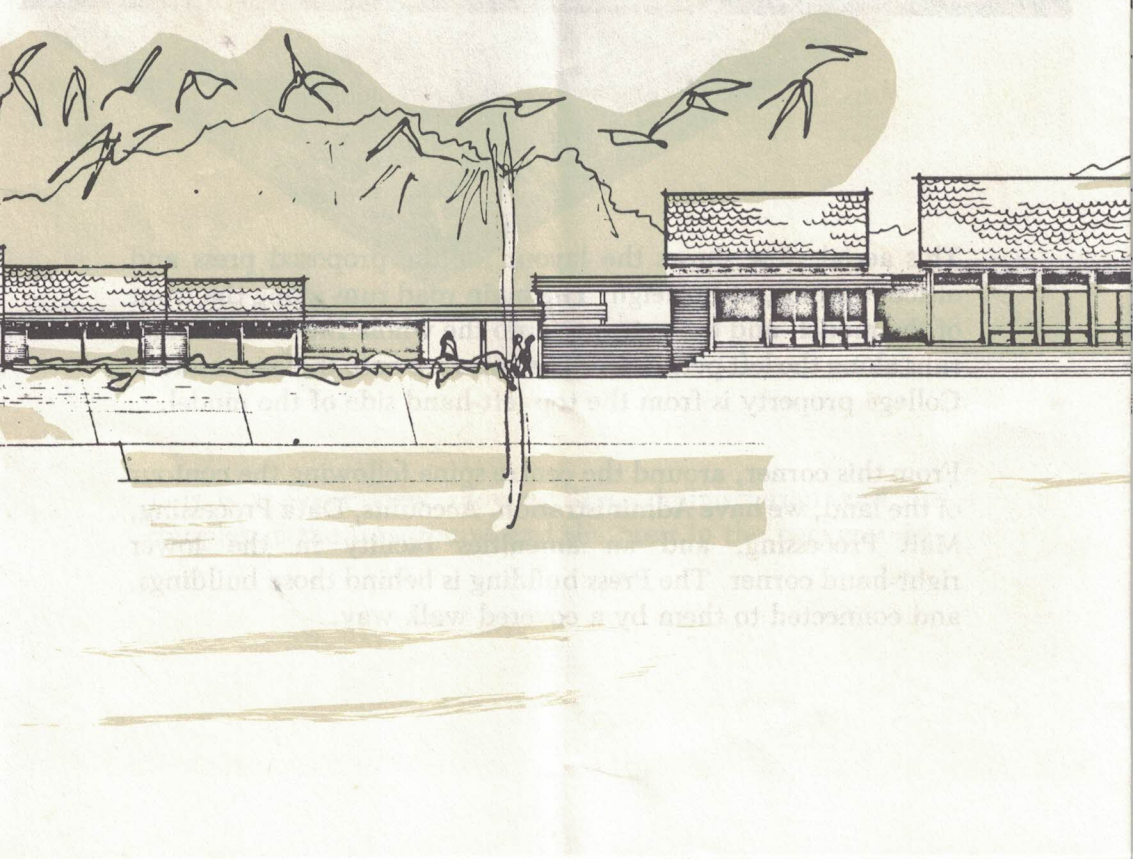
BURLEIGH HEADS

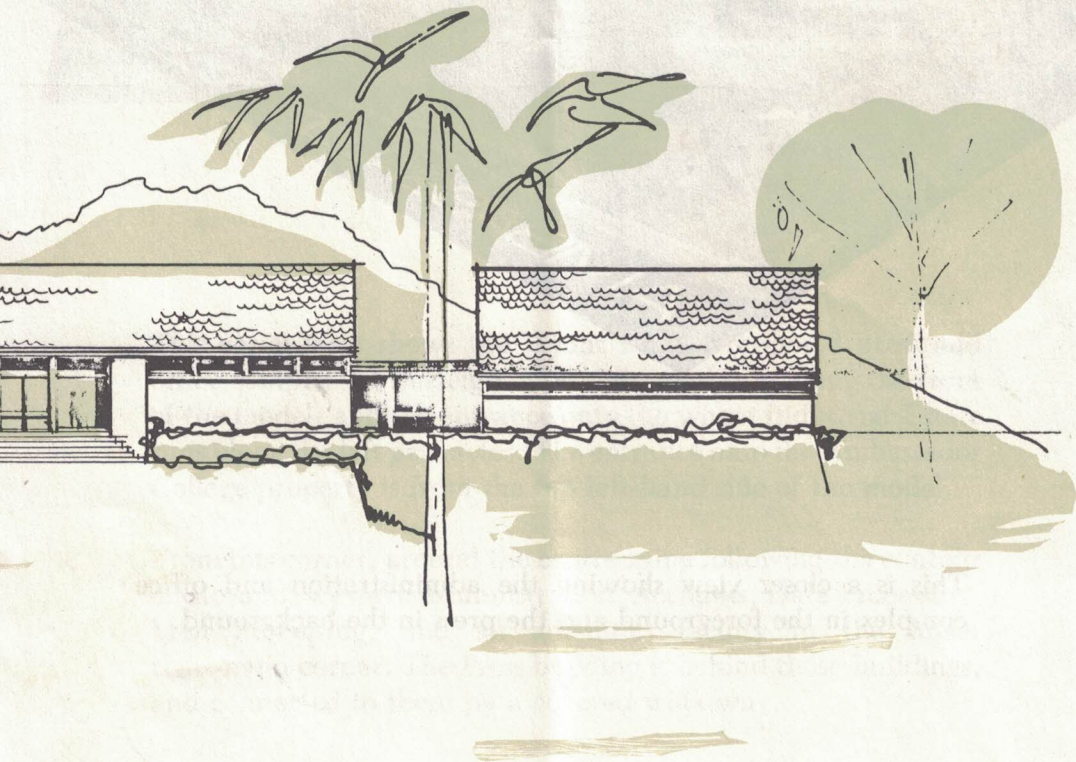
PROJECT

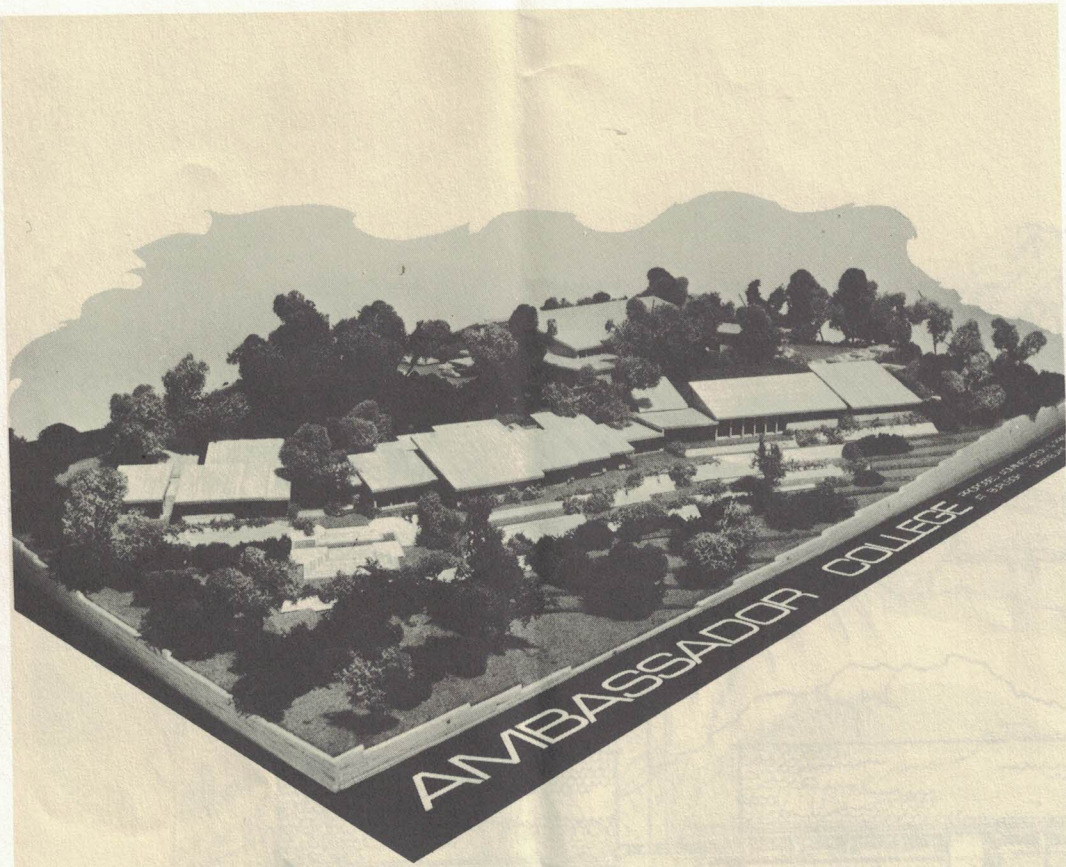












This is a closer view showing the administration and office complex in the foreground and the press in the background.



This aerial view shows the layout for the proposed press and office complex, at Burleigh. The main road runs along the front of the model, and the entrance onto the whole Industrial Estate runs along the left perimeter. The entrance onto the Ambassador College property is from the top left-hand side of the model.

From this corner, around the centre spine following the contour of the land, we have Administration, Accounts, Data Processing, Mail Processing, and an amenities facility in the lower right-hand corner. The Press building is behind those buildings, and connected to them by a covered walk-way.



This view shows a close up impression of what part of the complex will look like from eye level, looking through the trees. The buildings are designed to fully integrate into the enviroment, and preserve as much of the natural "bush" beauty as possible.

